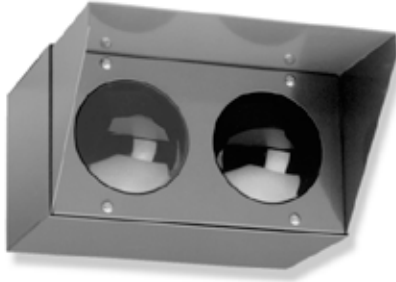


**JOB NAME** \_\_\_\_\_

**TYPE** \_\_\_\_\_

**CATALOG NUMBER** \_\_\_\_\_

**Signs**  
**Signal Lights**  
**S251 SERIES**



**Surface Signal**

Catalog Numbers	Incandescent	LED
Wall Mount	<input type="checkbox"/> S251W	<input type="checkbox"/> S251W-L
Ceiling Mount	<input type="checkbox"/> S251C	<input type="checkbox"/> S251C-L

**SPECIFICATIONS**

**Construction**

- Fixture is constructed of 20 gauge steel with a bronze polyester coating
- Red and green glass lenses are glazed with silicone sealant
- Sun shield is integral with faceplate
- cULus listed, suitable for wet locations.

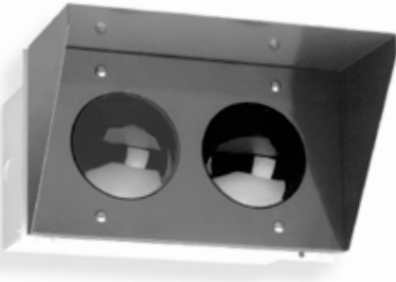
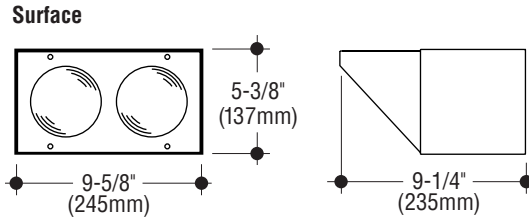
**Electrical**

- Wired for two 50W R20 incandescent or LED lamps on separate circuits. LED lamps are provided with fixture.

**Mounting**

Housing mounts directly to recessed junction box.

The S251 provides protection against reflective glare with its integral sun shield.



**Recessed Signal**

Catalog Numbers	Incandescent	LED
Recessed	<input type="checkbox"/> S251R	<input type="checkbox"/> S251R-L

**SPECIFICATIONS**

**Construction**

- Fixture is constructed of 20 gauge steel with a bronze polyester coating
- Red and green glass lenses are glazed with silicone sealant
- Sun shield is integral with faceplate
- cULus listed, suitable for wet locations.

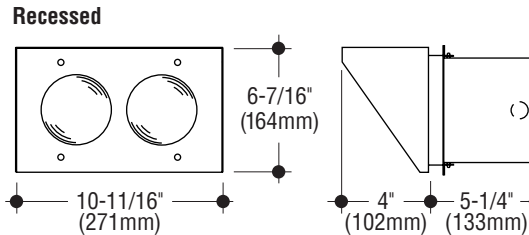
**Electrical**

- Wired for two 50W R20 incandescent or LED lamps on separate circuits. LED lamps are provided with fixture.

**Mounting**

Plaster mounting frame is provided.

The S251-R offers the option of recessed mounting



**How to Specify**

1. Select catalog number with desired features.
2. Add suffixes for options required to meet job conditions.



**C.W. Cole & Company, Inc.**  
**2560 N. Rosemead Boulevard**  
**South El Monte, CA 91733-1593**

**Tel. (626) 443-2473**  
**Fax (626) 443-9253**  
**info@colelighting.com**  
[www.colelighting.com](http://www.colelighting.com)