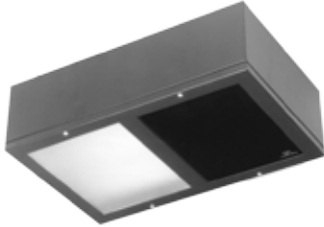


**JOB NAME** \_\_\_\_\_

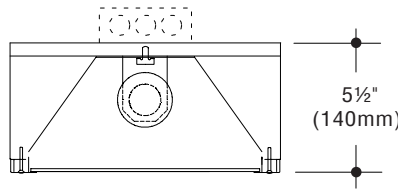
**Type** \_\_\_\_\_

**CATALOG NUMBER** \_\_\_\_\_

**SURFACE**



*Shown with Distributing Lens -DL in one compartment*



**Darkroom Safelites**

**Description**

Darkroom Safelites are task lighting fixtures required wherever photographic or X-ray film processing is performed. Filters must be selected to meet the requirements of the particular type of film that will be exposed to the light. Multiple-compartment fixtures allow safe processing of different types of film. Stainless steel construction for exposed surfaces is available for rooms with a corrosive atmosphere.

**Construction**

- Housing and trim are 20 gauge steel
- Standard finish on surface models and trim of recessed models is black enamel
- Recessed housing has white polyester coating
- Trim is fully gasketed to insure light-tight compartments
- Plaster frame with attached junction box is provided for recessed models
- One 8" x 10" Eastman Kodak filter is provided for each compartment
- cULus listed

**Electrical**

- Wired for one medium base 120V incandescent lamp in each compartment
- Each compartment is to be individually switched
- Lamps over 15W are not recommended in filter compartments
- 75W maximum in distributing lens compartment in surface models
- Maximum lamp wattage in recessed models varies with ceiling condition

**To Specify**

1. Select catalog number.
2. Add filter number and/or -DL for each compartment of model selected. Refer to filter data on back of this page.
3. For recessed models, add appropriate suffix (-T or -IC) for ceiling condition.
4. Add suffixes for options required to meet job conditions.



**C.W. Cole & Company, Inc.**  
 2560 N. Rosemead Boulevard  
 South El Monte, CA 91733-1593

Tel. (626) 443-2473  
 Fax (626) 443-9253  
 info@colelighting.com  
[www.colelighting.com](http://www.colelighting.com)

Catalog Numbers	Configuration	Dimensions
<input type="checkbox"/> PH810-S-*	<input type="checkbox"/>	11-3/4" x 9-3/4" (299mm x 248mm)
<input type="checkbox"/> PH810-2S-*. *	<input type="checkbox"/>	11-3/4" x 18-1/4" (299mm x 464mm)
<input type="checkbox"/> PH810-3S-*. *. *	<input type="checkbox"/>	11-3/4" x 27-3/8" (299mm x 695mm)
<input type="checkbox"/> PH810-4S-*. *. *. *	<input type="checkbox"/>	11-3/4" x 35-5/8" (299mm x 905mm)
<input type="checkbox"/> PH810-S4S-*. *. *. *	<input type="checkbox"/>	18-1/4" x 22-1/2" (464mm x 572mm)

\* Specify -DL and/or Feed location shown required filter

**Options**

**Stainless Steel:** Provides stainless steel housing and trim for surface models; trim for recessed models. Add suffix  -N.

**Distributing Lens:** Clear prismatic lens in one compartment for general illumination. Add suffix  -DL.

**Larger Size:** Fixtures with 10 x 12 filters. Dimensions are proportionately larger. Substitute **1012** for **810** in catalog number.

**Eastman Kodak Safelight Filters**

Number	Color	Material Usage
<input type="checkbox"/> OA	Greenish Yellow	Black-and-white contact and duplicating materials and projection films
<input type="checkbox"/> OC	Light Amber	Contact and enlarging papers
<input type="checkbox"/> 1	Red	Blue-sensitive materials and most photo-typesetting materials
<input type="checkbox"/> 1A	Light Red	Slow orthochromatic materials
<input type="checkbox"/> 2	Dark Red	Fast orthochromatic materials, green-sensitive x-ray films
<input type="checkbox"/> 3	Dark Green	Some panchromatic materials
<input type="checkbox"/> 6B	Brown	Blue-sensitive x-ray films
<input type="checkbox"/> 8	Dark Yellow	Color print and color intermediate motion picture films
<input type="checkbox"/> 10	Dark Amber	Color negative papers, materials, panchromatic black-and-white papers
<input type="checkbox"/> 13	Amber	Color negative papers, panchromatic black-and-white papers
<input type="checkbox"/> GBX		Most blue-sensitive x-ray films, most green-sensitive medical x-ray films