

JOB NAME _____

TYPE _____

CATALOG NUMBER _____

Plugging Box

TL310-WCS SERIES

SPECIFICATIONS

Construction

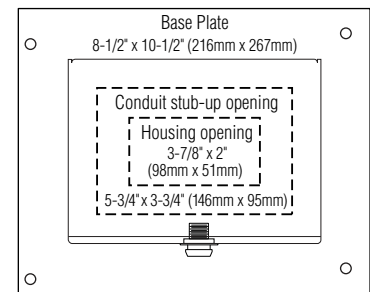
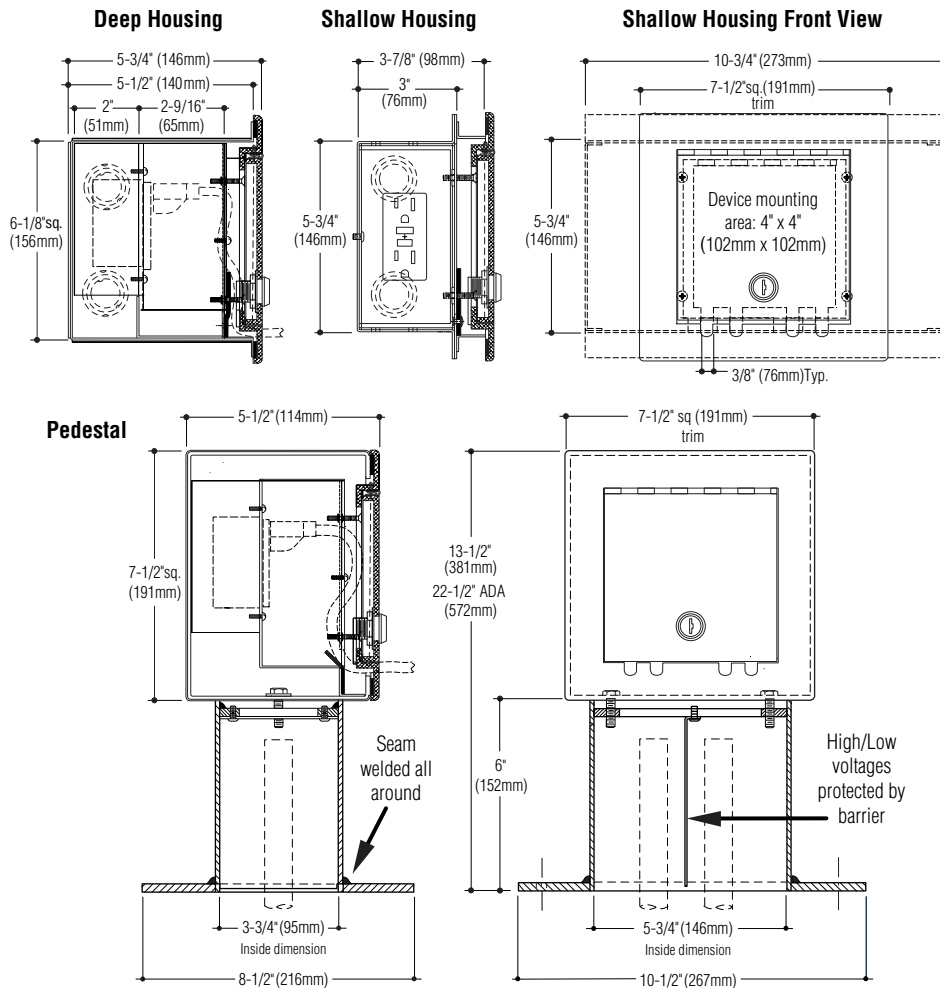
Cover is cast aluminum with self-closing, locking door • All units keyed alike • Cord slots backed with a rubber baffle system prevents the ingress of water • Recessed housing is 16 gauge electro-galvanized steel • Pedestal models are all aluminum • Cover and housing coated with metallic aluminum polyester powder coating

Electrical

Various wiring device combinations are available as indicated with catalog suffixes • Barrier provided between high and low voltage devices • Recessed housing has eight 1/2" - 3/4" - 1" combination trade-size knockouts • Pedestal allows for two conduit stub-ups • ETL listed while in use

Mounting

Recessed housing suitable for concrete pour. Pedestal models include anchor bolts



Pedestal Conduit Clearance

Catalog Numbers

Recessed/Deep housing, solid receptacle plate with voltage barrier	<input type="checkbox"/> TL310-WCS
Recessed/Shallow housing, solid receptacle plate with voltage barrier	<input type="checkbox"/> TL310-WCS-SH
6" Pedestal housing, solid receptacle plate with voltage barrier	<input type="checkbox"/> TL310-WCS-PED

Installed Devices

Weather resistant/tamper resistant receptacle	<input type="checkbox"/> -GFCI
Telephone or data connection in modular Decora® cutout	<input type="checkbox"/> -RJ11 or <input type="checkbox"/> -RJ45
Universal Serial Bus port	<input type="checkbox"/> -USB
High-definition multimedia interface	<input type="checkbox"/> -HDMI
Specify device to be installed or desired provisions-only	<input type="checkbox"/> -9/(device or provisions)
30 amp or greater will require deep housing	<input type="checkbox"/> -9/(indicate receptacle)

Options

Bronze cover: Satin finished, clear coated.
(Recessed only) Add suffix **-B.**

Pedestal height over 6": Add suffix **-PED/(height).**

ADA compliant pedestal: Add suffix **-PED/ADA.**

No key: Add suffix **-NK.**

Custom color: Contact factory with preference. Add suffix **-CC.**

How to Specify

1. Select catalog number with desired features.
2. Add suffixes for options required to meet job conditions.



C.W. Cole & Company, Inc.
2560 N. Rosemead Boulevard
South El Monte, CA 91733-1593

Tel. (626) 443-2473
Fax (626) 443-9253
info@colelighting.com
www.colelighting.com