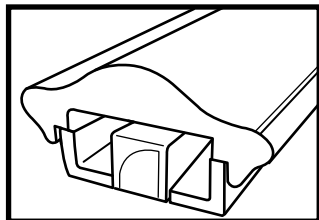


**JOB NAME** \_\_\_\_\_

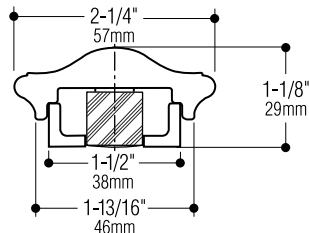
**TYPE** \_\_\_\_\_

**CATALOG NUMBER** \_\_\_\_\_

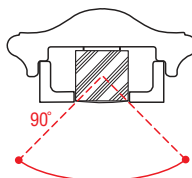
**LED**



**Dimensions**



**Symmetric 90°**



**Lightrail - LR7**

**Construction**

• Available in aluminum, malleable steel or bronze with welded and blended joints for a seamless appearance • Each rail is tailored to fit existing stairs, ramps, and walkways • Aluminum and malleable steel rails coated with polyester powder, and bronze rails satin finished and clear-coated.

**Electrical**

• Both linear and point-source LEDs are available in a variety of colors and beam spreads • Remote driver located in enclosure. 0-10v dimming driver and weatherproof enclosure available • Electrical feed locations, number of drivers, and driver wattage capacities will be determined during submittal drawing and field measuring processes • cULus listed, suitable for wet locations.

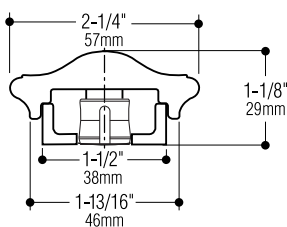
**How to Specify**

Every Lightrail is custom designed and fabricated to your specific project conditions. Drawings will be submitted on each project requesting specific dimensions to assure proper fit. Plans and elevation drawings are required for pricing and submittal drawing production.

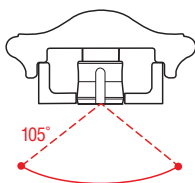
1. Submit catalog number, and options; (example: LR7P-LED-AL-V-REM).
2. Add special features and requirements necessary to complete specification.

**Alphabet ZETA750S Puck LED**

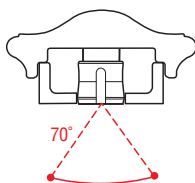
**Dimensions**



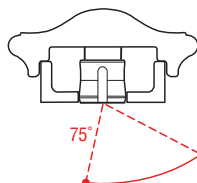
**Symmetric 105°**



**Symmetric 70°**



**Asymmetric 75°**



Catalog Number	Aluminum (-AL)	Malleable Steel (-STL)	Bronze (-BZ)
Post mounted, remote driver	<input type="checkbox"/> LR7P-LED-AL-REM	<input type="checkbox"/> LR7P-LED-STL-REM	<input type="checkbox"/> LR7P-LED-BZ-REM
Wall mounted, remote driver	<input type="checkbox"/> LR7W-LED-AL-REM	<input type="checkbox"/> LR7W-LED-STL-REM	<input type="checkbox"/> LR7W-LED-BZ-REM
<b>Zeta750 Puck</b>			
Post mounted, remote driver	<input type="checkbox"/> LR7P-PK-AL-REM	<input type="checkbox"/> LR7P-LED-STL-REM	<input type="checkbox"/> LR7P-PK-BZ-REM
Wall mounted, remote driver	<input type="checkbox"/> LR7W-PK-AL-REM	<input type="checkbox"/> LR7W-LED-STL-REM	<input type="checkbox"/> LR7W-PK-BZ-REM

**Options**

**Caprail Ends:** by Julius Blum®

Square End Piece. Add suffix  -SQ,  
 Straight Lambs Tongue. Add suffix  -LT,  
 Volute. Add suffix  -V.

**Puck Beam spread:** (105° standard).

70°, Add suffix  -70°.  
 Asymmetric 75°, Add suffix  -ASYM/75°.

**Dimming:** Universal voltage 0-10V driver.  
 Add suffix  -DIM

**Escutcheon/Base:** by Julius Blum® 3" by 3" sq.  
 decorative base for direct burial post.  
 Add suffix  -ES.

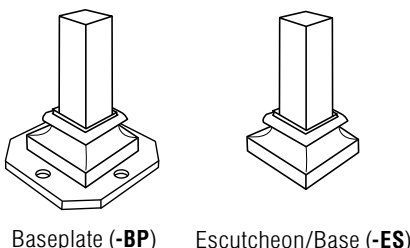
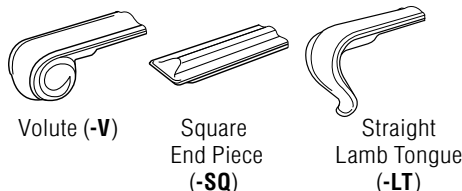
**Baseplate:** 5" square baseplate + four mounting holes. Add suffix  -BP.

**Frosted lens:** (clear diffuser standard).  
 Add suffix  -FL.

**4000°K Color temperature:** (3000°K standard).  
 Add suffix  -4K.

**Emergency battery:** Provides up to 90min. of operation. Add suffix  -EM.

**Custom Color:** RAL Powder-Coat, consult with factory. Add suffix  -CC



**C.W. Cole & Company, Inc.**  
 2560 Rosemead Boulevard  
 South El Monte, CA 91733-1593

Tel. (626) 443-2473  
 Fax (626) 443-9253  
 info@colelighting.com  
[www.colelighting.com](http://www.colelighting.com)