

JOB NAME _____

Type _____

CATALOG NUMBER _____

Steplites

252 SERIES

SPECIFICATIONS

Construction

- Housing is constructed from 16 gauge electro-galvanized steel finished with a white polyester coating
- Faceplate is 20 gauge steel with metallic aluminum polyester coating, or 20 gauge satin stainless steel, each are gasketed and retained by stainless steel screws
- Diffuser is frosted tempered glass set in silicone sealant
- Optional junction box is cast aluminum with white polyester coating
- cETLus listed suitable for wet location in any wall construction
- All models are suitable for concrete pour.

Electrical

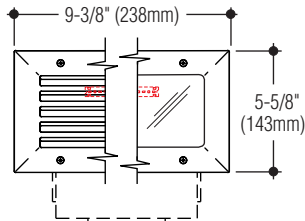
- Fixture is wired with high performance LED modules, or one E26 medium base lamp socket
- Integral driver is standard universal voltage; optional 0-10V dimming driver available
- Housing provided with 1/2" conduit knockout on each side suitable for 4 wire thru-wiring, 2 in and 2 out
- Optional junction box allows 8 wire thru-wiring, 4 in and 4 out. Provided with two 1/2" tapped conduit entrances in the bottom and one 1/2" tapped conduit entrance in each side.

Mounting

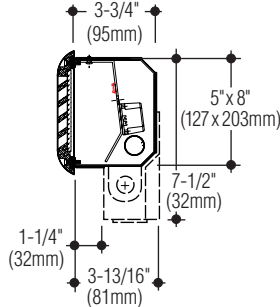
Housing has flange with holes for mounting.

Cast Aluminum Trim

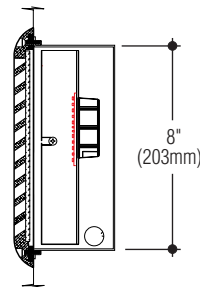
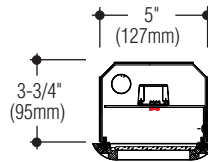
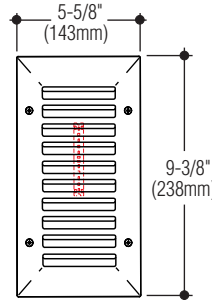
Louvered



Non-louvered

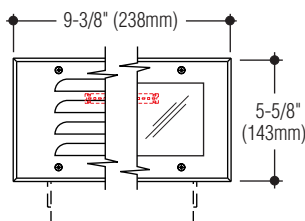


Cast Aluminum Vertical Louvered

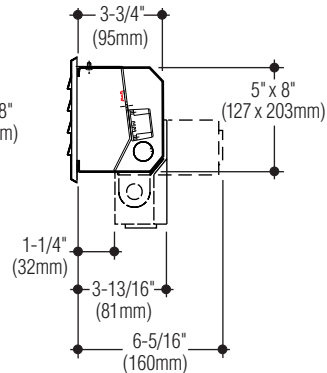


Formed Steel Trim

Louvered



Non-louvered



Catalog Numbers Lamp	Cast aluminum faceplate			Formed steel faceplate	
	Louwer, Hor.	Louwer, Vert.	Non-Louwer	Louwer	Non-Louwer
LED 1.5W, (126 lm @ 3000°K)	<input type="checkbox"/> L252W-L26	<input type="checkbox"/> L252W-L26V	<input type="checkbox"/> L252W-L26G	<input type="checkbox"/> L252W	<input type="checkbox"/> L252GW
LED 3.2W, (331 lm @ 3000°K)	<input type="checkbox"/> L252W-L26-HO	<input type="checkbox"/> L252W-L26V-HO	<input type="checkbox"/> L252W-L26G-HO	<input type="checkbox"/> L252W-HO	<input type="checkbox"/> L252GW-HO
LED 6.4W, (662 lm @ 3000°K)	<input type="checkbox"/> L252W-L26-HO-2	<input type="checkbox"/> L252W-L26V-HO-2	<input type="checkbox"/> L252W-L26G-HO-2	<input type="checkbox"/> L252W-HO-2	<input type="checkbox"/> L252GW-HO-2
One E26 medium base lamp	<input type="checkbox"/> T252W-L26	<input type="checkbox"/> T252W-L26V	<input type="checkbox"/> T252W-L26G	<input type="checkbox"/> T252W	<input type="checkbox"/> T252GW

Lumens shown are source. Photometric data available for Steplites can be downloaded at: <https://www.colelighting.com/photometrics>

Options

Junction box: Bottom or back mounted junction box as required for feed-thru. Add suffix -J.

Cast Bronze faceplate: Satin finish, clear coated. (L26 models) Add suffix -B.

Stainless steel faceplate: Louvered and non louvered. Not available in L26. Add suffix -N.

Tamperproof screws: Socket head faceplate screws. Add suffix -TP.

Opal glass diffuser: Tempered. Add suffix -OPL.

Alternate faceplate color:

Black or white or custom color.
Add suffix -BLK, -WHT or -CC
(Contact factory for custom preference).

LED colors:

4100°K (146 lm), HO (384 lm), HO-2 (768 lm).
Add suffix -4K.

Amber* (FWC compliant, 590nm). Add suffix -AMB.

Blue* Add suffix -BLU.

* Not available in HO-2.

Dimming: Universal voltage 0-10V driver.

Add suffix -DIM.

Emergency battery (4 Watt): Provides up to 90 minutes operation. Add suffix -EM.

How to Specify

1. Select catalog number with desired features.
2. Add suffixes for options required to meet job conditions.



C.W. Cole & Company, Inc.
2560 Rosemead Boulevard
South El Monte, CA 91733-1593

Tel. (626) 443-2473

Fax (626) 443-9253

info@colelighting.com

www.colelighting.com