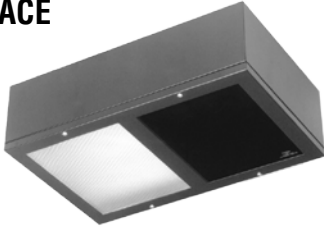
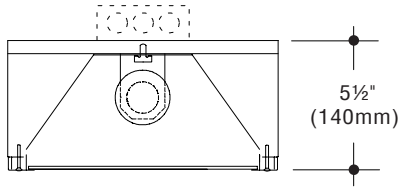


## Darkroom Safelites

### SURFACE



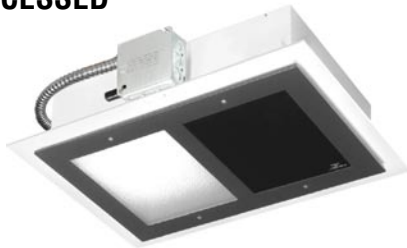
Shown with Frosted Lens -DL  
in one compartment



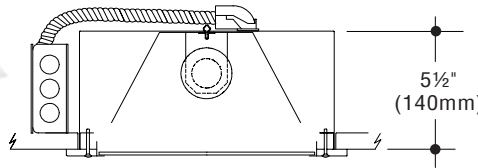
Catalog Numbers	Configuration	Dimensions
PH810-S-*		11-3/4" x 9-3/4" (299mm x 248mm)
PH810-2S-**-*		11-3/4" x 18-1/4" (299mm x 464mm)

- \* Specify -DL and/or required filter
- Max. 15W equivalent lamp per filter compartment
- Max. 150W equivalent lamp in distributing lens compartment

### RECESSED



Shown with Frosted Lens -DL  
in one compartment



Catalog Numbers	Configuration	Dimensions inches (millimeters)	
		Housing	Trim
PH810-PB-**-†		11-3/4" x 9-3/4" (299 x 248)	13" x 10-7/8" (330 x 276)
PH810-2PB-**-**-†		11-3/4" x 18-1/4" (299 x 464)	13" x 19-1/2" (330 x 495)

- \* Specify -DL and/or required filter
- Max. 15W equivalent lamp per filter compartment
- † Specify Ceiling Condition
- T Non-insulated. 150W max. lamp in distributing lens compartment. Thermal protection provided.
- IC Insulated. 40W maximum lamp in distributing lens compartment.

#### Options

**Stainless Steel:** Provides stainless steel trim for recessed models only. Add suffix **-N**.

**Distributing Lens:** Frosted tempered glass in one compartment for general illumination. Add suffix **-DL**.

#### Photographic Filters:

- No.1, Red. Add Suffix **-1**
- No.1A, Light Red. Add Suffix **-1A**
- No.2, Dark Red. Add Suffix **-2**
- 6B, Brown. Add Suffix **-6B**
- Type GBX-2, Sensitive x-ray films. Add Suffix **-GBX**

For more detailed information on filters, please see chart on second page.

#### Description

Darkroom Safelites are task lighting fixtures required wherever photographic or X-ray film processing is performed. Filters must be selected to meet the requirements of the particular type of film that will be exposed to the light. Multiple-compartment fixtures allow safe processing of different types of film. Stainless steel construction for exposed surfaces is available for rooms with a corrosive atmosphere.

#### Construction

- Housing and trim are 20 gauge steel
- Standard finish on surface models and trim of recessed models is black enamel
- Recessed housing has white polyester coating
- Trim is fully gasketed to insure light-tight compartments
- Plaster frame with attached junction box is provided for recessed models
- One 8" x 10" Eastman Kodak filter equivalent is provided for each compartment
- cULus listed.

#### Electrical

- Wired with one E26/medium-base lamp socket in each compartment
- Each compartment should be individually switched
- LED Lamps rated at 2700 CCT and an incandescent equivalent of no more than 15 watts should be used in the filtered compartment. "DL" compartments can use incandescent-equivalent LED lamps of 150 watts or less.

#### To Specify

1. Select catalog number.
2. Add filter number and/or -DL for each compartment of model selected. Refer to filter data on back of this page.
3. For recessed models, add appropriate suffix (-T or -IC) for ceiling condition.
4. Add suffixes for options required to meet job conditions.



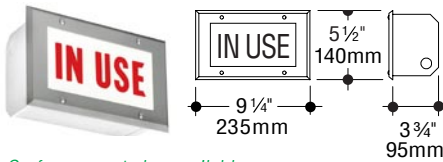
**C.W. Cole & Company, Inc.**  
2560 Rosemead Boulevard  
South El Monte, CA 91733-1593

Tel. (626) 443-2473  
Fax (626) 443-9253  
info@colelighting.com  
[www.colelighting.com](http://www.colelighting.com)

### Darkroom Safelites / Warning Signs

#### WARNING SIGNS

See complete line in Directional Signs section.



Surface mount also available.

**Catalog Number** SL252-IN USE

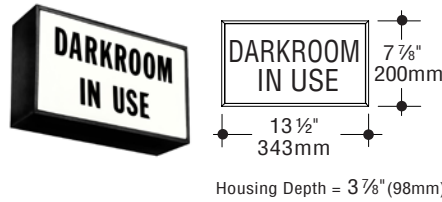
**Construction:** housing is 16 guage steel suitable for poured concrete construction., Trim is 18 guage steel finished with metallic aluminum polyester. Red letters on white.

**Electrical:** One LED module, or optional E26 med. based lamp socket ( Add suffix **-E26**).

**Mounting:** Recessed housing has flanges with holes for mounting.

**Options**

**Stainless steel faceplate:** Add suffix **-N**.



**Catalog Number** SL193-DARKROOM IN USE

**Construction:** Fixture is constructed of extruded aluminum • Finish is black polyester coating • Silk-screened copy on white butyrate snap-in panel • Bracket is die-cast aluminum with black finish.

**Electrical:** SL193 signs are wired with two LED modules.

**Mounting:** Sign mounts directly to junction box

**Options**

**Bracket Mounts:** Back: **SL193** (Illustrated); Ceiling: **SL194**; or End: **SL192**.



**Catalog Number** SL130A-A14 or S130A-A14

**Construction:** Die-cast and extruded aluminum with white polyester coating. Red letters on white.

**Electrical:** Fixture is wired with LED modules (SL130A) or two E26 med. based lamp sockets (S130A).

**Mounting:** Surface wall mount fixtures have holes in back panel for direct mounting to junction box.

**Options**

**Bracket Mounting:** (back wall is standard); Top ceiling: **-C**; Left end: **-LE** or Right end **-RE**.

#### Photographic Filters

FILTER	COLOR	MATERIAL	Bulb Wattage (110-130 volt)
			Direct Illumination (not less than 1.2m [4 ft.])
No.1	Red	Blue-sensitive materials, KODAGRAPH Projection, and some LINAGRAPH Papers. Most phototypesetting materials	15-watt*
No.1A	Light red	Slow orthochromatic materials. KODALITH and KODAGRAPH Orthochromatic Materials. High resolution plates.	15-watt*
No. 2	Dark red	Fast orthochromatic materials, green-sensitive x-ray films, EKTALINE Papers, and orthochromatic LINAGRAPH Papers.	15-watt*
6B	Brown	Blue-sensitive x-ray films	15-watt*
Type GBX-2	Sensitive x-ray	Blue-sensitive x-ray films except SB Film. Most green-sensitive medical x-ray films except CFA, PF, Single-Coated Medical X-Ray Film-Green-Sensitive, and PHOTOFLURE Film-Green-Sensitive, all of which require Safelight Filter No. 2 (dark red). All KODAK INDUSTREX Products	15-watt*
		SB Film	7.5-watt*
DL		<b>Distributing Lens:</b> Frosted tempered glass in one compartment for general illumination. Add suffix - <b>DL</b>	* Incandescent equivalent



**C.W. Cole & Company, Inc.**  
 2560 Rosemead Boulevard  
 South El Monte, CA 91733-1593

Tel. (626) 443-2473  
 Fax (626) 443-9253  
 info@colelighting.com  
[www.colelighting.com](http://www.colelighting.com)