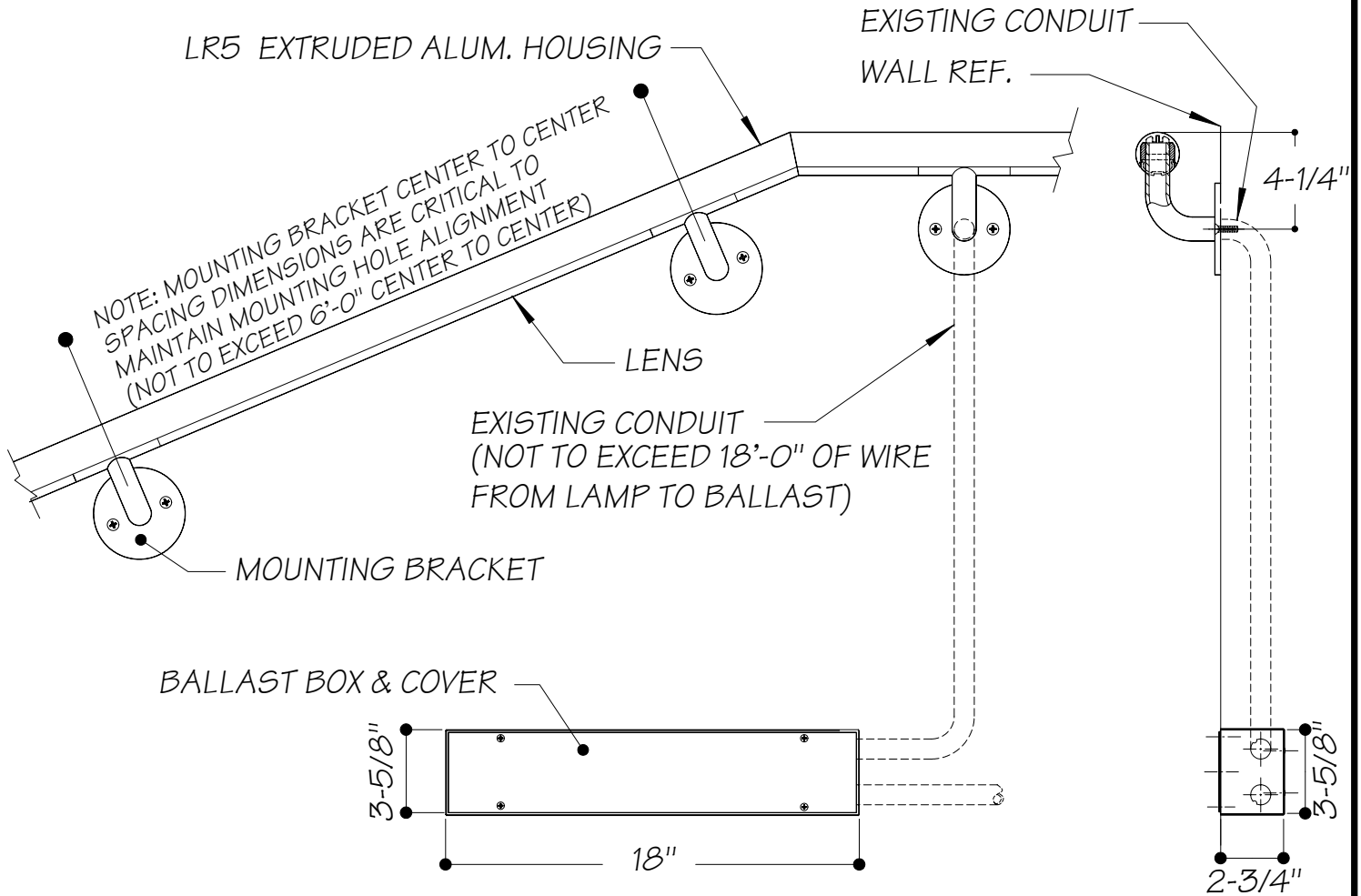


INFORMATION AND DESIGNS HEREON ARE PROPRIETARY AND CONFIDENTIAL. THEY MAY NOT BE USED OR REPRODUCED WITHOUT THE EXPRESSED PERMISSION OF C.W. COLE & CO., INC.

LR5W-INSTALLATION INSTRUCTIONS (WALL MOUNTED)



1. PRECAST HOLE AT FEED LOCATION(S) WITH CONDUIT FLUSH WITH WALL AS IDENTIFIED ON SUBMITTAL DRAWING.
2. POSITION LIGHTRAIL FEED BRACKET OVER CONDUIT, POSITION LIGHTRAIL AT REQUIRED MOUNTING HEIGHT ABOVE GRADE.
3. MARK WALL THRU. MOUNTING HOLE IN EACH ADDITIONAL MOUNTING BRACKET AND REMOVE FROM WALL AND SET ASIDE.
4. INSTALL MOUNTING HARDWARE ANCHORAGE.
5. FEED SUPPLY WIRES THRU. ARM INTO HOUSING.
6. REPOSITION LIGHTRAIL OVER FEED & ANCHORAGE AND SECURE IN PLACE WITH (2) 1/4-20 FLAT HD. M/SCREWS PER MOUNTING BRACKET (MOUNTING HARDWARE BY E.C.)
7. MAKE WIRE CONNECTIONS AS REQUIRED.
8. REMOVE SNAP-IN LENS, INSTALL T5 FLUORESCENT LAMPS.
9. REPLACE LENSES.

FILE NAME: L: Install Instruction\LR5W-INSTL.PDF

LR5W-INSTALL

COLE
LIGHTING SINCE 1911

C.W. COLE & CO., INC. 2560 N. ROSEMEAD BLVD., SOUTH EL MONTE, CA 91733-1593 • (626) 443-2473 • FAX (626) 443-9253

WALL MOUNT LR5 LIGHTRAIL

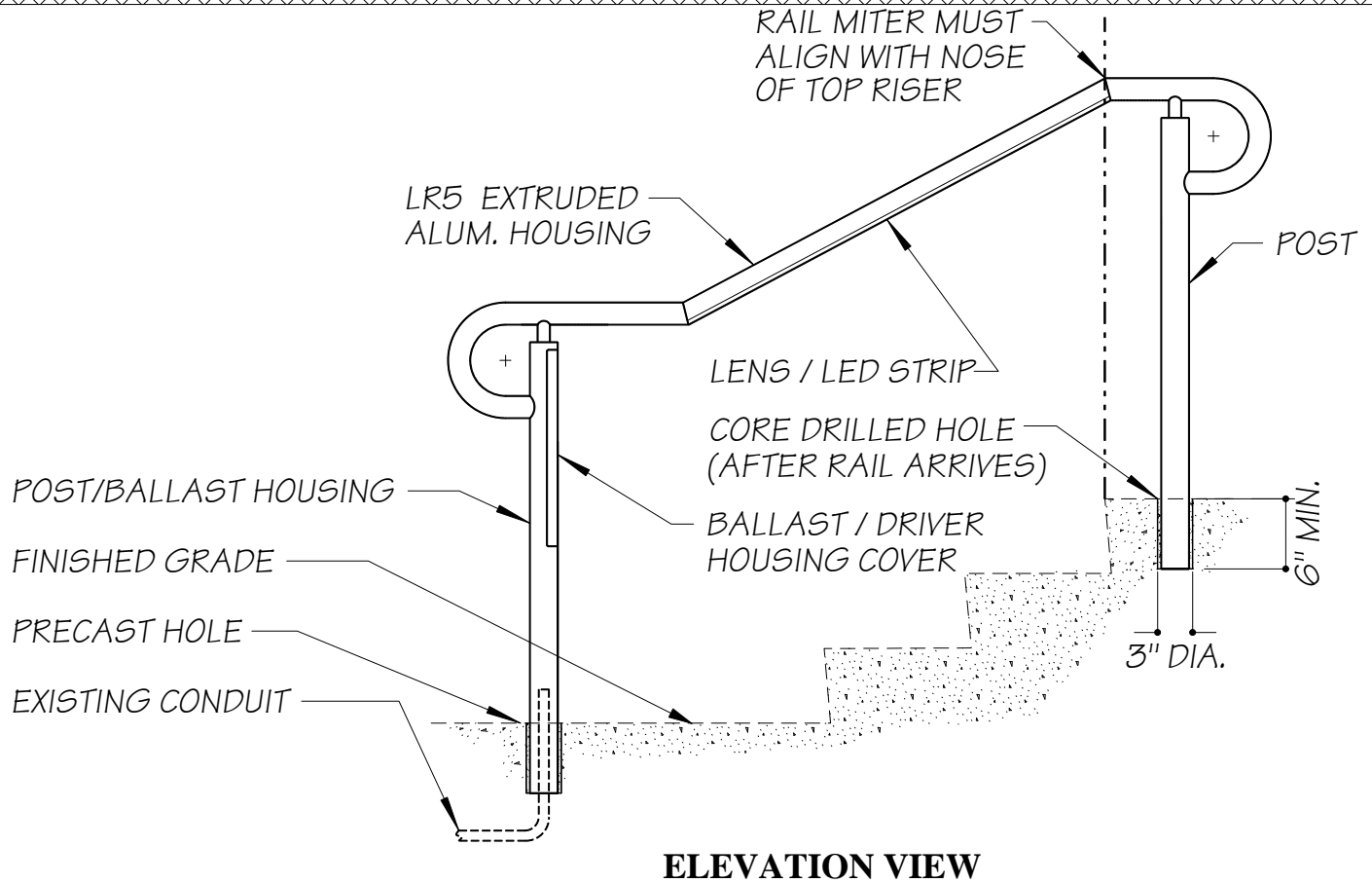
Catalog No. LR5-W

DRAWN BY JERI WMS	DATE 05-09-02	CHECKED BY D.W.	DATE 05-09-02	SCALE N.T.S.
----------------------	------------------	--------------------	------------------	-----------------

DRAWING No **LR5W-INSTALL**

LR5P-INSTALLATION INSTRUCTIONS (DIRECT BURIAL)

INFORMATION AND DESIGNS HEREON ARE PROPRIETARY AND CONFIDENTIAL. THEY MAY NOT BE USED OR REPRODUCED WITHOUT THE EXPRESSED PERMISSION OF C.W. COLE & CO., INC.



ELEVATION VIEW

NOTE:

1. PRECAST 3" DIA. HOLE AT FEED LOCATION(S) WITH CONDUIT PROJECTING ABOVE GRADE.
2. POSITION LIGHTRAIL WITH BALLAST / DRIVER POST AT CONDUIT-FEED HOLES AND CORE DRILL 3" DIA. HOLES AS REQUIRED FOR OTHER POSTS.
3. FEED ELECTRICAL SUPPLY WIRES THRU POST, BALLAST / DRIVER, HOUSING BOTTOM INTO BALLAST / DRIVER AREA.
4. INSERT POST INTO HOLES.
5. SECURE LIGHTRAIL PLUMB IN PLACE.
6. POUR QUICK-SETTING CONCRETE INTO CORED HOLES, ALLOW CONCRETE TO SET AS RECOMMENDED ON PACKAGING.
7. AFTER CONCRETE HAS SET, REMOVE BALLAST HOUSING COVER AND CONNECT ELECTRICAL SUPPLY WIRES TO ELECTRONIC BALLAST / DRIVER AS REQUIRED.
8. REPLACE BALLAST / DRIVER HOUSING COVER.
9. REMOVE SNAP-IN LENS, INSTALL T5 FLUORESCENT LAMPS. (FLUORESCENT ONLY)
10. REPLACE LENSES. (FLUORESCENT ONLY)

FILE NAME: Install Instruction\LR5Install.dwg

LR5P-INSTALL	COLE LIGHTING SINCE 1911	C.W. COLE & CO., INC. 2560 N. ROSEMEAD BLVD., SOUTH EL MONTE, CA 91733-1593 • (626) 443-2473 • FAX (626) 443-9253		
		POST MOUNT LR5 LIGHTRAIL		
		Catalog No. LR5P		
		DRAWN BY JERI WMS	DATE 05-09-02	CHECKED BY D.W.
		SCALE N.T.S.	DRAWING No LR5P-INSTALL	

- 1. REV. 01-06-09 CHANGE CORE FROM 4" DIA. TO 3" DIA. - JERI WMS
- 2. REV. 03-1-13 COMBINED FLUOR. & LED - BY E.V.
- 3. REV. 10-04-17 ADD ALIGNMENT NOTE- BY J WMS