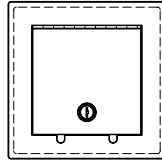


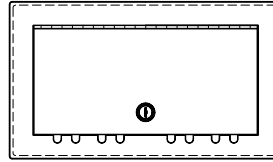
Installation Instruction Sheet

Cat. No.: TL310-WCS & TL410-WCS

TL310-WCS

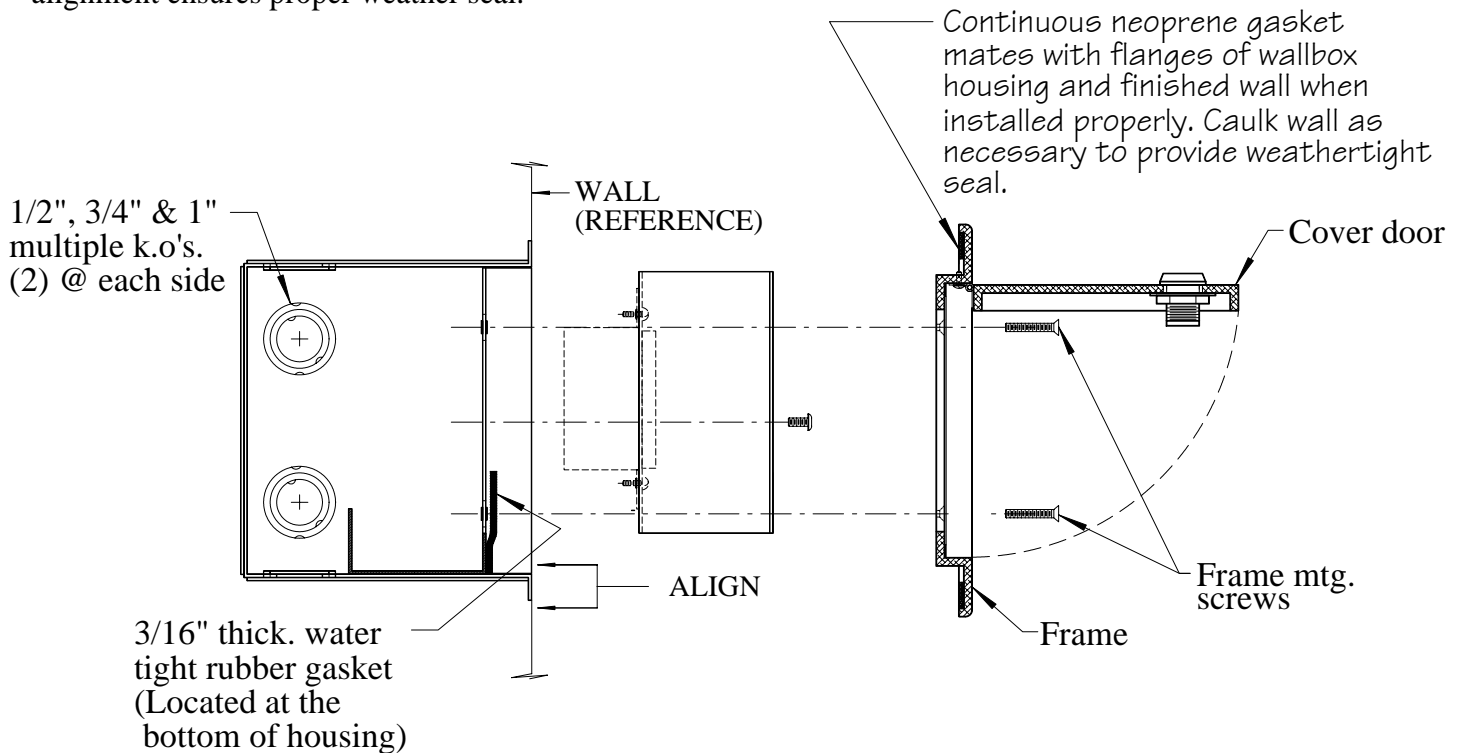


TL410-WCS



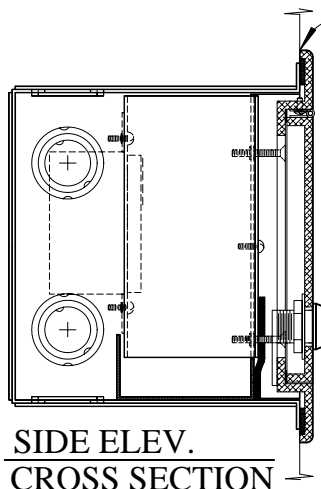
STEP 1

Remove cast alum. cover set & receptacle plate. Bring supply wires through desired entrance. Install 16 ga. steel housing (suitable for concrete pour) into wall. Be certain that the 3/16" thick water tight rubber gasket is on the bottom side of the housing. Ensure that front housing aligns with finished wall surface. Housing to wall alignment ensures proper weather seal.



STEP 2

Ensure that power to unit is off. Splice supply wires with receptacles. Replace wired receptacle plate and fasten in place. Mount finished cast alum. cover set to housing using (4) factory supplied stainless steel 8-32 X 1-1/4" flat head phillips m./ screws.



CAULK AROUND PERIMETER OF DOOR FRAME FOR WEATHERTIGHT SEAL.

NOTE:

- * THIS PRODUCT MUST BE INSTALLED IN ACCORDANCE WITH THE APPLICABLE INSTALLATION CODE BY A PERSON FAMILIAR WITH THE CONSTRUCTION AND OPERATION OF THE PRODUCT AND THE HAZARDS INVOLVED.
- * CONTACT WITH ACID-WASH OF ANY TYPE TO ANY SURFACE OF STEPLIGHT WILL/MAY VOID WARRANTY.
- * RECESSED HOUSING NOT SEALED FROM MOISTURE. PROTECTION MUST BE PROVIDED TO PREVENT WATER FROM ENTERING HOUSING.

SIDE ELEV.
CROSS SECTION

REVISIONS

REV. 6-11-12 ADDED RUBBER GKT. NOTE BY C.O.
1-25-13 CHGD. 1/4" TURN FASTENER TO CHICAGO LOCK - E.V.
REV. 12-8-15, ADDED TL410 FIXT. TO SHT. - E.V.

COLE
Lighting