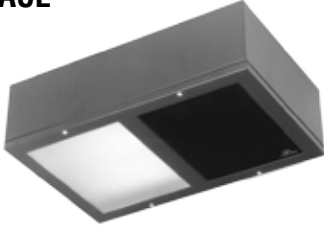
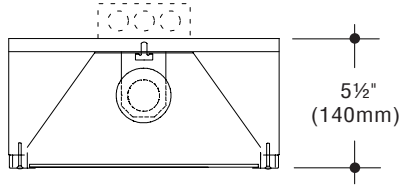


## Darkroom Safelites

### SURFACE



Shown with Distributing Lens -DL in one compartment



Catalog Numbers	Configuration	Dimensions
PH810-S-*		11-3/4" x 9-3/4" (299mm x 248mm)
PH810-2S-**-*		11-3/4" x 18-1/4" (299mm x 464mm)
PH810-3S-***-*		11-3/4" x 27-3/8" (299mm x 695mm)
PH810-4S-****-*		11-3/4" x 35-5/8" (299mm x 905mm)
PH810-S4S-**-***-*		18-1/4" x 22-1/2" (464mm x 572mm)

\* Specify -DL and/or required filter  
 Feed location shown

### Description

Darkroom Safelites are task lighting fixtures required wherever photographic or X-ray film processing is performed. Filters must be selected to meet the requirements of the particular type of film that will be exposed to the light. Multiple-compartment fixtures allow safe processing of different types of film. Stainless steel construction for exposed surfaces is available for rooms with a corrosive atmosphere.

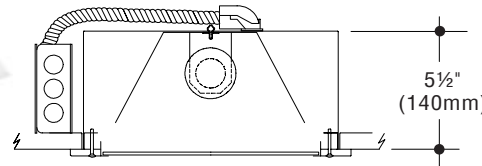
### Construction

- Housing and trim are 20 gauge steel
- Standard finish on surface models and trim of recessed models is black enamel
- Recessed housing has white polyester coating
- Trim is fully gasketed to insure light-tight compartments
- Plaster frame with attached junction box is provided for recessed models
- One 8" x 10" Eastman Kodak filter is provided for each compartment
- cULus listed

### RECESSED



Shown with Distributing Lens -DL in one compartment



Catalog Numbers	Configuration	Dimensions inches (millime)	
		Housing	Trim
PH810-PB-**-†		11-3/4" x 9-3/4" (299 x 248)	13" x 10-7/8" (330 x 276)
PH810-2PB-***-†		11-3/4" x 18-1/4" (299 x 464)	13" x 19-1/2" (330 x 495)
PH810-3PB-****-†		11-3/4" x 27-3/8" (299 x 695)	13" x 28-5/8" (330 x 727)
PH810-4PB-*****-†		11-3/4" x 35-5/8" (299 x 905)	13" x 36-7/8" (330 x 937)
PH810-4SPB-**-***-†		18-1/4" x 22-1/2" (464 x 572)	19-1/2" x 22-1/2" (495 x 572)

\* Specify -DL and/or required filter  
 Junction box location shown

† Specify Ceiling Condition

-T Non-insulated. 200W maximum lamp in distributing lens compartment. Thermal protection provided.

-IC Insulated. 40W maximum lamp in distributing lens compartment.

### Electrical

- Wired for one medium base 120V incandescent lamp in each compartment
- Each compartment is to be individually switched
- Lamps over 15W are not recommended in filter compartments
- 75W maximum in distributing lens compartment in surface models
- Maximum lamp wattage in recessed models varies with ceiling condition

### To Specify

1. Select catalog number.
2. Add filter number and/or -DL for each compartment of model selected. Refer to filter data on back of this page.
3. For recessed models, add appropriate suffix (-T or -IC) for ceiling condition.
4. Add suffixes for options required to meet job conditions.

### Options

**Stainless Steel:** Provides stainless steel housing and trim for surface models; trim for recessed models. Add suffix **-N**.

**Distributing Lens:** Clear prismatic lens in one compartment for general illumination.

Add suffix **-DL**.

**Larger Size:** Fixtures with 10 x 12 filters.

Dimensions are proportionately larger.

Substitute **1012** for **810** in catalog number.



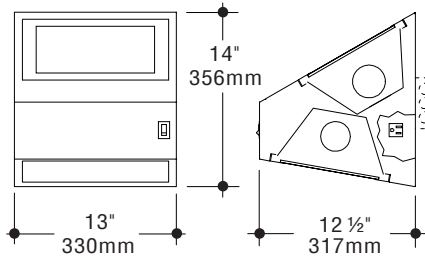
**C.W. Cole & Company, Inc.**  
 2560 N. Rosemead Boulevard  
 South El Monte, CA 91733-1593

Tel. (626) 443-2473  
 Fax (626) 443-9253  
 info@colelighting.com  
[www.colelighting.com](http://www.colelighting.com)

## Darkroom Safelites / Warning Signs

## Darkroom Safelites

### WALL



Shown with optional Rocker Switch -SW and Convenience Outlet -CO

**Catalog Number**

**PHB-810-(filter number)**

### Options

**Convenience Outlet:** Add suffix **-CO**.

**Rocker Switch:** 3-way (up/off/down). Add suffix **-SW**.

### Specifications

#### Construction

- Fixture is 20 gauge steel with black enamel finish
- Diffuser in general illumination uplite compartment is clear prismatic glass
- 8" x 10" Eastman Kodak filter is provided in downlite compartment
- cULus listed

#### Electrical

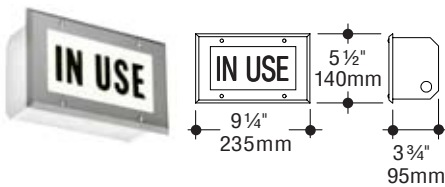
- Uplite is wired for one 150W incandescent lamp
- Downlite filter compartment is wired for one 15W incandescent lamp
- Each compartment is to be individually switched
- 120V only

#### Mounting

- Fixture mounts to recessed junction box in wall.

### WARNING SIGNS

See complete line in Directional Signs section.



**Catalog Number**

**S252-IN USE**

**Construction:** 18 gauge steel, aluminum paint. Red letters on white.

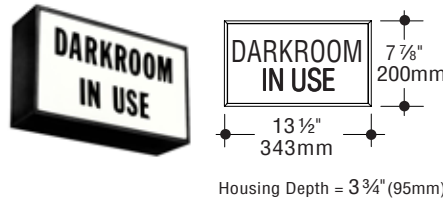
**Electrical:** One 25W A19 medium base incandescent

**Mounting:** Recessed housing has flanges with holes for mounting.

#### Options

**Stainless steel faceplate:** Add suffix **-N**.

**Fluorescent:** One 7W (G23 base) compact fluorescent. 120V standard. Add suffix **-F**.



**Catalog Number**

**S193-DARKROOM IN USE**

**Construction:** Extruded and formed aluminum, satin finish, clear anodized. Red letters on white.

**Electrical:** Two 25W T6 1/2 intermediate base incandescent

**Mounting:** Surface housing mounts to junction box

#### Options

**Bracket Mounting:** Ceiling: **-C**; End: **-LE** or **-RE**.

**Recessed Mounting:** Specify **S191**.

**Fluorescent:** Two 7W (G23 base) compact fluorescent. 120V standard. Add suffix **-F**.



**Catalog Number**

**S130A-A14**

**Construction:** Die-cast and extruded aluminum with white polyester coating. Red letters on white.

**Electrical:** Two 25W T6 1/2 intermediate base incandescent

**Mounting:** Surface housing mounts to junction box

#### Options

**Bracket Mounting:** Ceiling: **-C**; End: **-LE** or **-RE**.

**Fluorescent:** Two 7W (G23 base) compact fluorescent. 120V standard. Add suffix **-F**.

### Eastman Kodak Safelight Filters

Number	Color	Material Usage
OA	Greenish Yellow	Black-and-white contact and duplicating materials and projection films
OC	Light Amber	Contact and enlarging papers
1	Red	Blue-sensitive materials and most photo-typesetting materials
1A	Light Red	Slow orthochromatic materials
2	Dark Red	Fast orthochromatic materials, green-sensitive x-ray films
3	Dark Green	Some panchromatic materials
6B	Brown	Blue-sensitive x-ray films
8	Dark Yellow	Color print and color intermediate motion picture films
10	Dark Amber	Color negative papers, materials, panchromatic black-and-white papers
13	Amber	Color negative papers, panchromatic black-and-white papers
GBX		Most blue-sensitive x-ray films, most green-sensitive medical x-ray films



**C.W. Cole & Company, Inc.**  
**2560 N. Rosemead Boulevard**  
**South El Monte, CA 91733-1593**

**Tel. (626) 443-2473**

**Fax (626) 443-9253**

**info@colelighting.com**

**[www.colelighting.com](http://www.colelighting.com)**