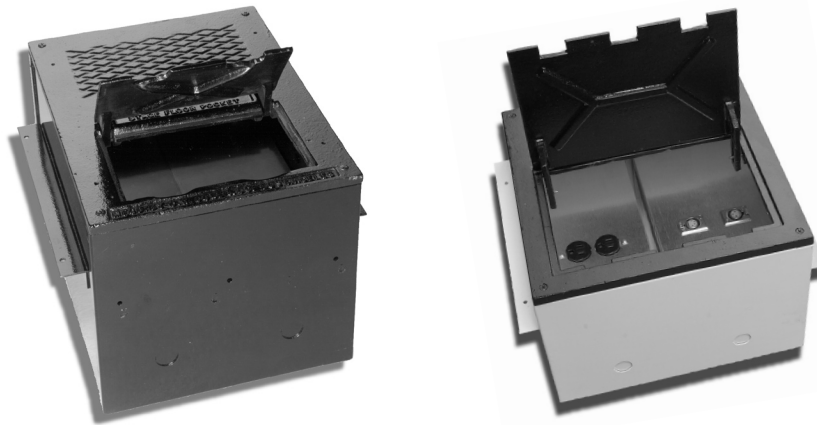
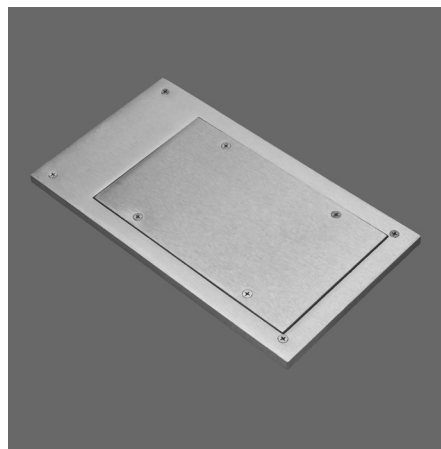


Plugging Boxes

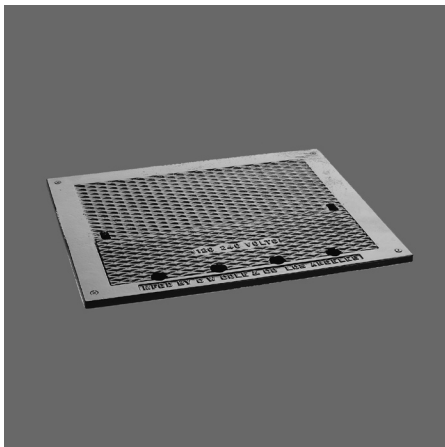
Theatrical Stage Floor Pockets Exterior Watertight Box



The 350 Series boxes provide capacity for many electrical devices. The TLS-353 (top right) has an extra large access door.



The TLS-351-W may be installed in wet locations not subject to immersion.



Theatrical stage floor pockets, in various widths, have a non-skid pattern and cord slots.

350 SERIES Recessed Stage Pockets

Description

The TLS-350 Series Plugging Boxes are recessed floor mounted enclosures designed for the temporary connection of electrical devices in theatrical installations where large or numerous devices are required. The unique TLS-351-W is designed for use in areas where water may fall on the plugging box. It is not recommended for areas subject to submersion.

Features

Cover opens to provide access to devices. Cord slot allows door to remain closed with cord connected (except TLS-351-W). Non-skid pattern in certain models' covers provide traction for traffic. Separate wiring compartments allow high voltage devices on one side, low voltage devices on the other.

Applications

The TLS-350 Series Plugging Boxes are appropriate in schools, churches, theatrical stages and speaker platforms.

Custom

If your project demands a special fixture we would be pleased to discuss the production of custom fixtures to suit your specific conditions. For more information on our custom capabilities, please contact your local Cole representative.



C. W. Cole & Company, Inc.
2560 N. Rosemead Boulevard
South El Monte, CA 91733-1593

Fax (626) 443-9253
Tel. (626) 443-2473
info@colelighting.com
www.colelighting.com

Plugging Boxes

350 SERIES Recessed Stage Pockets

Specifications

Construction

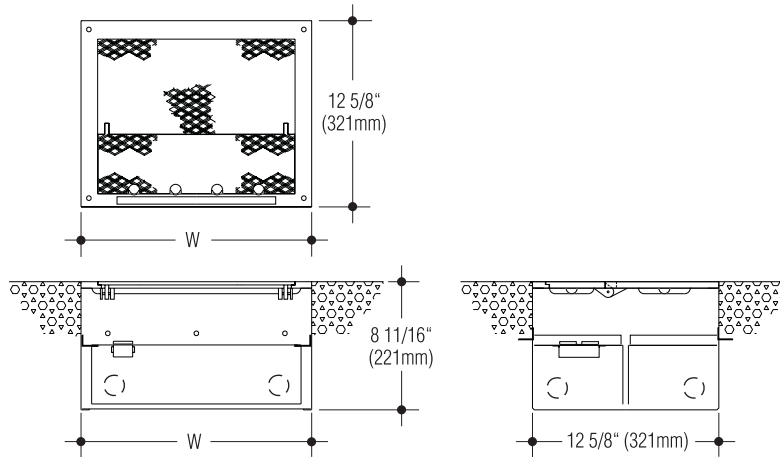
- Cover is cast iron with non-skid tread design and cord-clearance slots (except TLS-351-W)
- 16 gauge steel housing
- Cover and housing black polyester powder coated
- TLS-351-W satin finished cast aluminum cover substitutes for standard cover on TLS-351
- TLS-351-W has neoprene gasket and is suitable for wet locations




Electrical

- Various wiring devices or combinations are available as indicated with catalog suffixes
- All parts grounded
- Housings have eight ½"-¾"-1" combination trade-size conduit entrances

Mounting

- Two removable angles furnished for mounting to any side
- Suitable for mounting in wood or concrete floors
- Grout is required to seal cover with finished floor
- Throw-away pan included for casting into poured concrete to provide clearance for cover



OUTLETS			CATALOG NUMBER				
NUMBER OF DEVICES & CORD SLOTS	WIDTH (W)	DEVICE MOUNTING AREA	Duplex 15 amp twist-lock 	Duplex 15 amp U-ground 	Single 3-wire U-ground power outlet (NEMA 5-20) 20 amp, 125 volt 	Blank interior plate. No device Furnished	Other devices or combinations as required. Specify requirements
1	7"	4"W x 3¾"	TLS-351-2	TLS-351-3	TLS-351-6	TLS-351-8	TLS-351-9
2	9¾"	6"W x 3"	TLS-352-2	TLS-352-3	TLS-352-6	TLS-352-8	TLS-352-9
3	12 ⁵ / ₈ "	9½"W x 6"	TLS-353-2	TLS-353-3	TLS-353-6	TLS-353-8	TLS-353-9
4	15 ⁵ / ₈ "	12"W x 3"	TLS-354-2	TLS-354-3	TLS-354-6	TLS-354-8	TLS-354-9

Options

Cast Iron Cover: TLS-351-W only.

Add suffix **-FE**.

Watertight Cover: TLS-351 only. No cord slot.

Device mounting area is 4"W x 7".

Add suffix **-W**.

How to Specify

1. Select catalog number with desired features.
2. Add suffixes for options required to meet job conditions.
3. For higher-rated outlets, specify required amperage.



C. W. Cole & Company, Inc.
2560 N. Rosemead Boulevard
South El Monte, CA 91733-1593

Fax (626) 443-9253
Tel. (626) 443-2473
info@colelighting.com
www.colelighting.com