

Church Lighting

From classic designs to contemporary interpretations, Cole craftsmen have the experience to create lighting to complement any house of worship. We invite your selection from our standard product styles, or allow us to assist in the development of custom designs to perfectly match a unique architectural theme.

The restoration and replication of existing lighting fixtures, including upgrading the lighting to more efficient sources, is an option for utilizing older fixtures that already perfectly suit the structure. Our experts will work with you to follow this option to continue to enjoy existing fixtures.

COLE
Lighting

C. W. Cole & Company, Inc.
2560 N. Rosemead Boulevard
South El Monte, CA 91733-1593

Fax (626) 443-9253
Tel. (626) 443-2473
info@colelighting.com
www.colelighting.com



*Peachtree Methodist Church
Atlanta, Georgia*



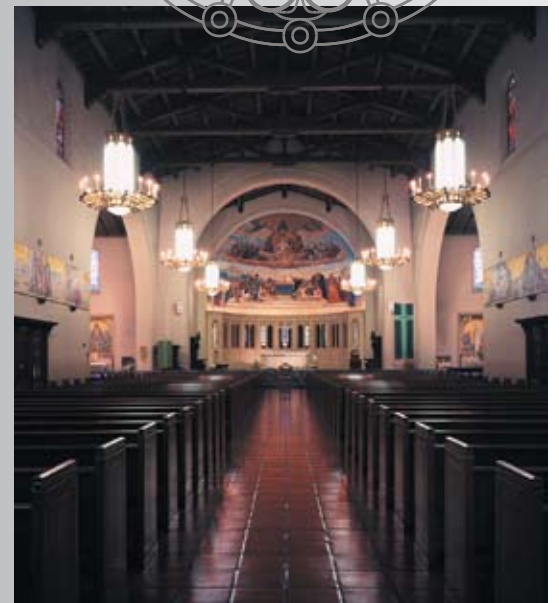
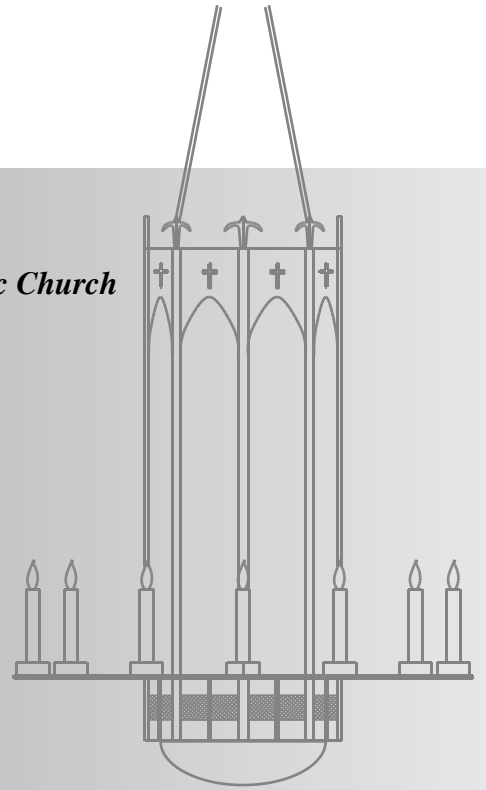
Function



COLE LIGHTING



*St. Philip the Apostle Catholic Church
Pasadena, California*



Style

COLE LIGHTING



*St. Ignacius Catholic Church
Forest Hill, Maryland*



Quality

Cole standard lighting styles provide a basis for many optional details. Features can be selected to best suit the architectural theme.

Refer to catalog pages for each series details.

Standard Church Lighting

*St. Ignacius
Catholic
Church*



SC 170 Series



WB 180 Series



CH 160 Series



CH 162 Series



Typical Religious Symbols

Cole offers numerous other lighting fixtures types to address supplemental lighting and signage requirements within the church environment.

Refer to catalog pages for details.

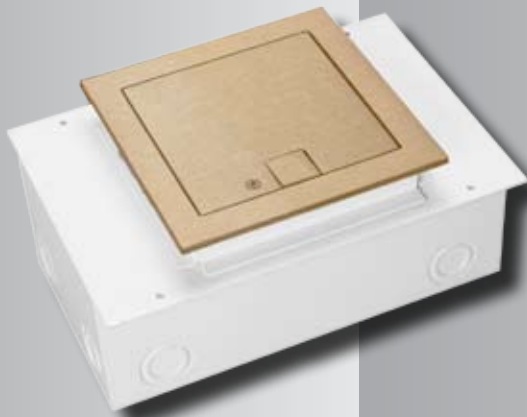
Supplemental Lighting



Anteproscaenium spotlights can be hidden behind structural elements to highlight the pulpit, altar, and architectural features.



This classic fixture style blends beautifully with traditional church architecture.



Plugging Boxes are available in many sizes for floor and wall installations.



Theatrical style spotlights add dramatic effects for performance areas or general highlighting.